



# Dinosaur Electronics

PO Box 1263, 1160 SE 27th St.

Lincoln City, OR 97367

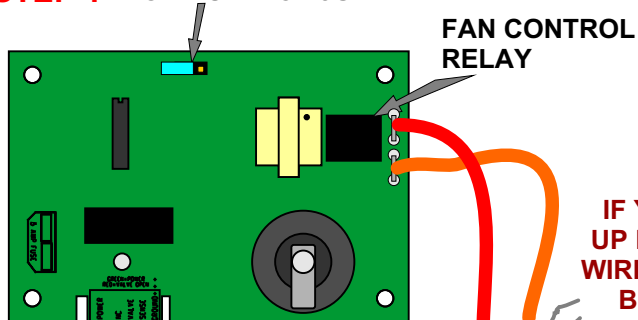
Ph. (541) 994-4344 Fax: (541) 994-2796

## FAN 50 PLUS INSTALLATION GUIDE

### STANDARD DINOSAUR FAN BOARD INSTALLATION

#### STEP 1 MODE SELECT JUMPER

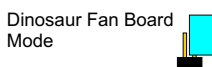
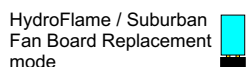
**WARNING**  
USE ONLY IN 12V DC FURNACES, NOT IN AC POWERED PARK MODELS.



**WARNING**  
IF YOU DON'T HOOK UP RED AND ORANGE WIRES AS SHOWN, THE BOARD WILL NOT OPERATE.

**WARNING**  
If your old board has a plastic cap over the spark coil, you should place it over the FAN 50 PLUS spark coil to keep the spark from jumping to the blower housing.

1. Remove Mode select jumper block. Use your fingers to remove it and put it back on one pin for storage.



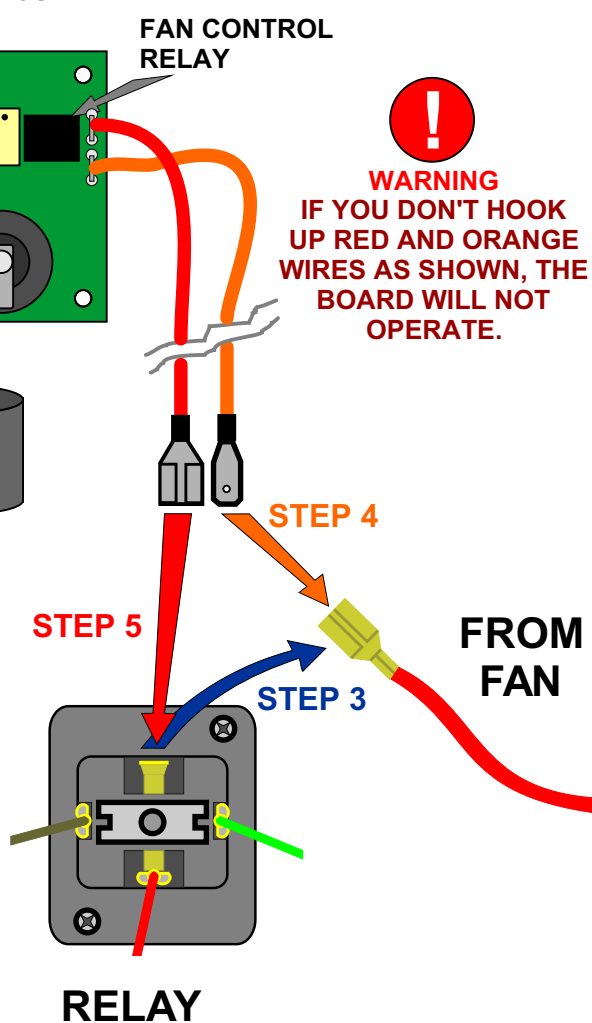
2. Install board as you would any other

3. Unplug the hot wire of the fan motor from the time delay relay.

4. Plug orange wire from board into hot wire from the fan motor.

5. Plug red wire from board onto time-delay relay.

6. You're done!



**ALL DINOSAUR BOARDS ARE COVERED BY A 3 YEAR FACTORY WARRANTY.**

#### ADDITIONAL NOTES:

The **FAN 50 PLUS** comes from the factory with these attributes:

20 second delay- Waits 20 seconds after fan power is applied before attempting ignition.

3-TRY- Comes as a true 3-try board. If the board fails to sense a flame after the normal 3 try sequence it will wait 1 ½ minutes and shut the fan motor off. One hour later it will repeat the same 3 try sequence before going into full lockout. The customer must then reset the thermostat before the board will begin a new cycle.

Comes configured to replace the HydroFlame / Suburban Fan Control Board. For use as a standard Dinosaur Fan Control Board, remove the mode select jumper block.



# Dinosaur Electronics

PO Box 1263, 1160 SE 27th St.

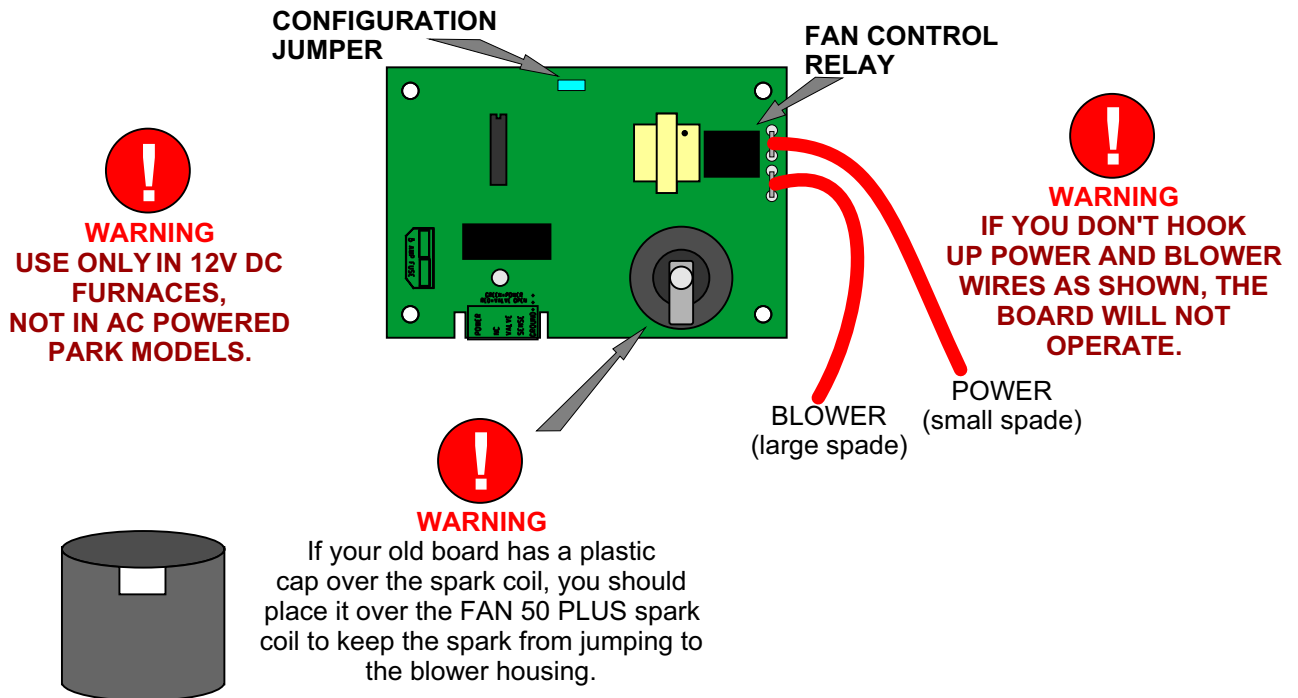
Lincoln City, OR 97367

Ph. (541) 994-4344 Fax: (541) 994-2796

## FAN 50 PLUS INSTALLATION GUIDE

for replacing the new Hydroflame and Suburban  
Fan Control Boards

Connects just the same as the original board.



**ALL DINOSAUR BOARDS ARE COVERED BY A 3 YEAR FACTORY WARRANTY.**

### ADDITIONAL NOTES:

The **FAN 50 PLUS** comes from the factory with these attributes:

20 second delay- Waits 20 seconds after fan power is applied before attempting ignition.

3-TRY- Comes as a true 3-try board. If the board fails to sense a flame after the normal 3 try sequence it will wait 1 ½ minutes and shut the fan motor off. One hour later it will repeat the same 3 try sequence before going into full lockout. The customer must then reset the thermostat before the board will begin a new cycle.

Comes configured to replace the HydroFlame / Suburban Fan Control Board. For use as a standard Dinosaur Fan Control Board, remove the mode select jumper block.